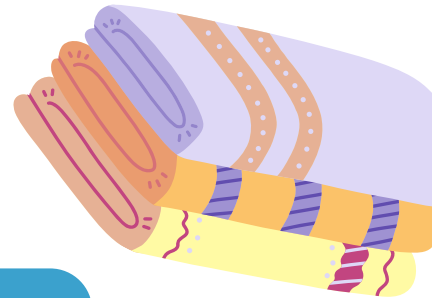




LAKE JAMES CHRISTIAN CAMP'S PACKING LIST AND CHECK-IN/OUT PROCEDURES



Day Camp 1: June 24, 2026

Day Camp 2: July 7, 2026

1

Check-in Info

Location: Memorial Hall Porch

- You will be asked to Check-In your camper, which includes asking about any current illnesses, a temperature check, and medication to be turned in.
- You will also write on the Check-In card who is picking up your camper.

Times

9:00 am: Check-In

Location

Memorial Hall Porch



2

Check-out Info

Location: Memorial Hall Lobby

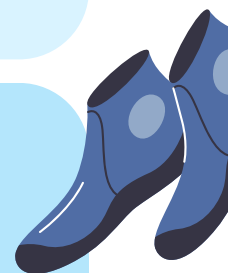
- Your camper will be waiting at 4:00pm in the Memorial Hall meeting area.
- After you have signed out your camper, you will proceed to the meeting area and will be met at the door by Camp Staff who will match the right camper with the right parent.
- You may then take your camper home.

Times

4 pm: Check-Out

Location

Memorial Hall Lobby



3

Lunch for Day Campers

Lunch will be served to your campers. Please make sure that your camper has had a good breakfast to last through the morning activities!

4

Snack Shoppe & Camp Store

There is no need to deposit money for these. The cost of camp for Day Camp includes a snack. The camp store will be open during check-out.



5

Missionary Info

Mark & Helen Begarly with Zimbabwe Outreach Ministries

The focus for Zimbabwe Outreach Ministries is to reach the lost for Christ and train them to run the ministries in turn reaching their own people for Christ.

6

Packing List

- Sunscreen
- swimsuit
- towel
- water shoes
- sunglasses, visor, or hat if desired
- backpack to carry all the above in



What Not to Bring to Camp: Please see our attached "Camp Rules and Regulations"

Any parent wishing to assist with Day Camp MUST have approval from our Associate Director, Kevin Petermen, and complete ALL faculty requirements prior to the start of Day Camp. If you have any questions about our No Cell Phone or Dress Code Policies, please see those documents at www.ljca.org.



1880 W 275 N ANGOLA, IN



260.833.2786



www.ljca.org



info@ljca.org

